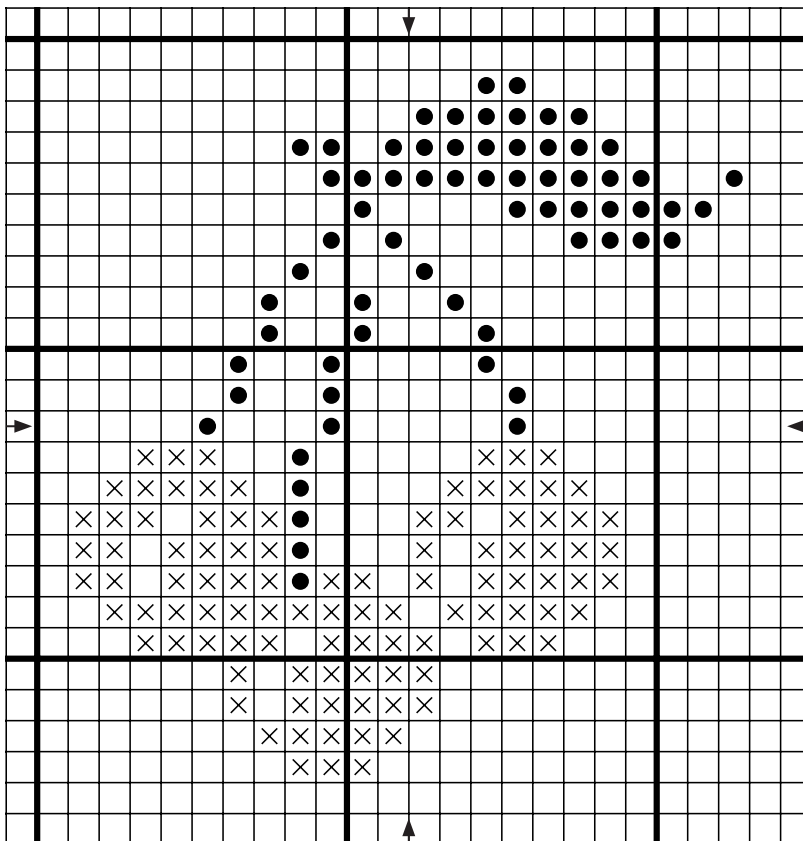
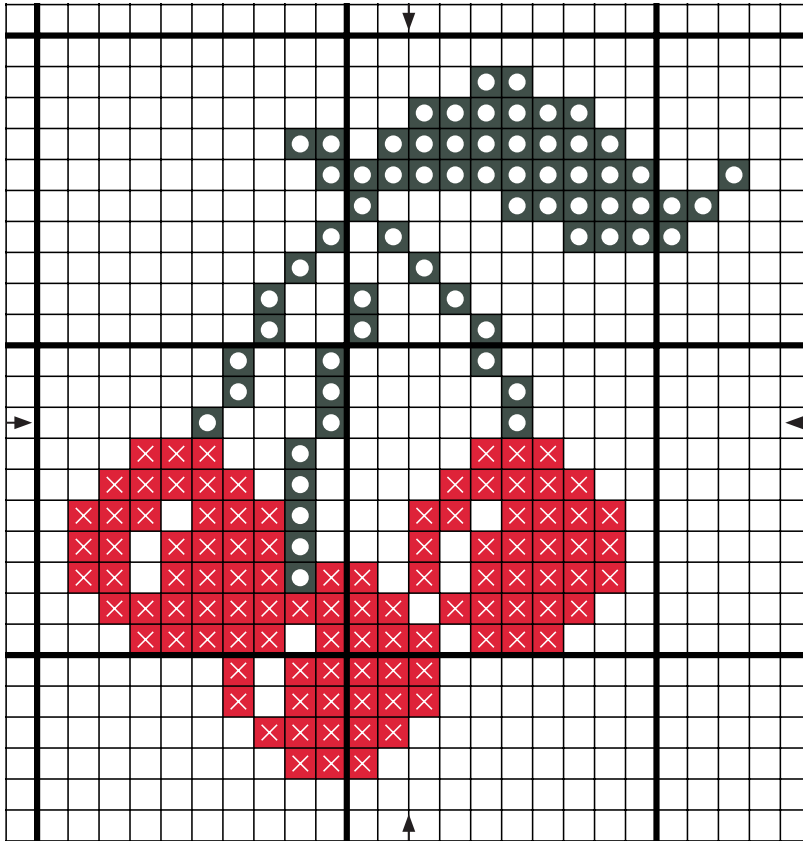


Fruit - Cherry / Cerises

Technical Chart / Diagramme



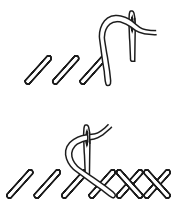
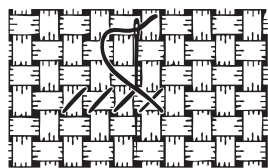
Note: Drawing not to scale / Dessin pas à l'échelle

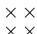

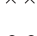







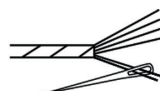
Tool Kit / Fournitures

Needle / Aiguille (no.24)
DMC Mouliné Spécial ART 117
Fabric / Toile*

Cross Stitch / Point de Croix



Symbol Symbole	Colour Couleur	N° of skeins N° d'échevettes
   	349	x 1
   	500	x 1



Use 2 strands / Utiliser 2 brins*

* Number of strands / skeins based on 14 or 16 count aida - Nombre de brins / d'échevettes calculé pour toile Aida 5.5 ou 6 pts/cm
Approx / Environ 7 x 7cm on 14 count / 5.5pts/cm